



**Cut Waste  
GROW PROFIT™**  
Second Annual  
Food Waste Forum – 2013

## **Reducing Food Waste, and the Role of Processors**

**Sean Drygas  
Maple Leaf Foods  
November 12, 2013**





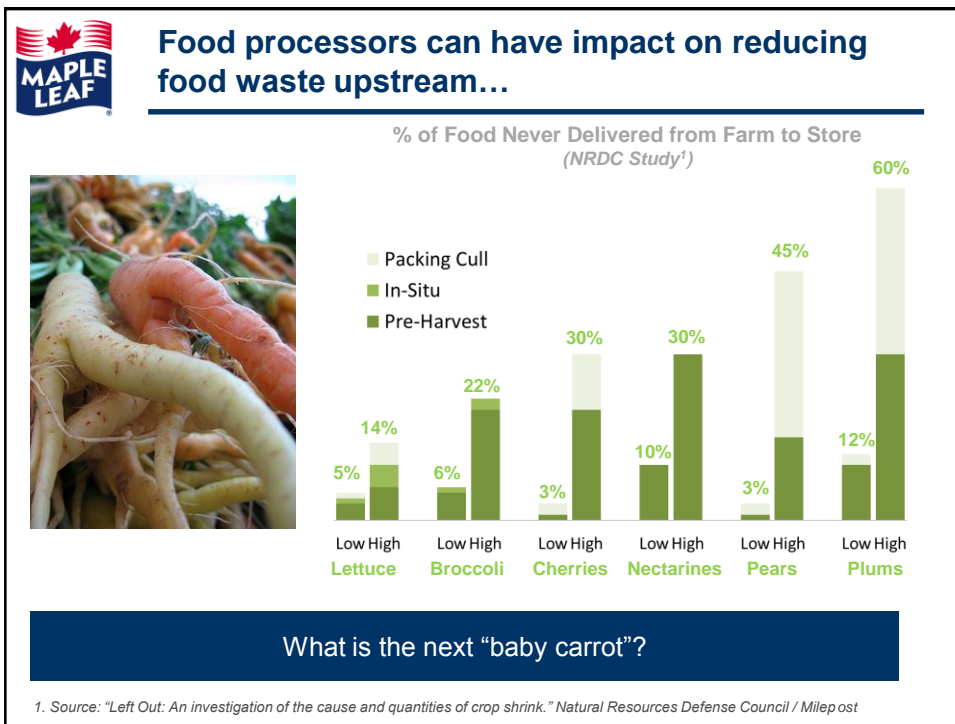
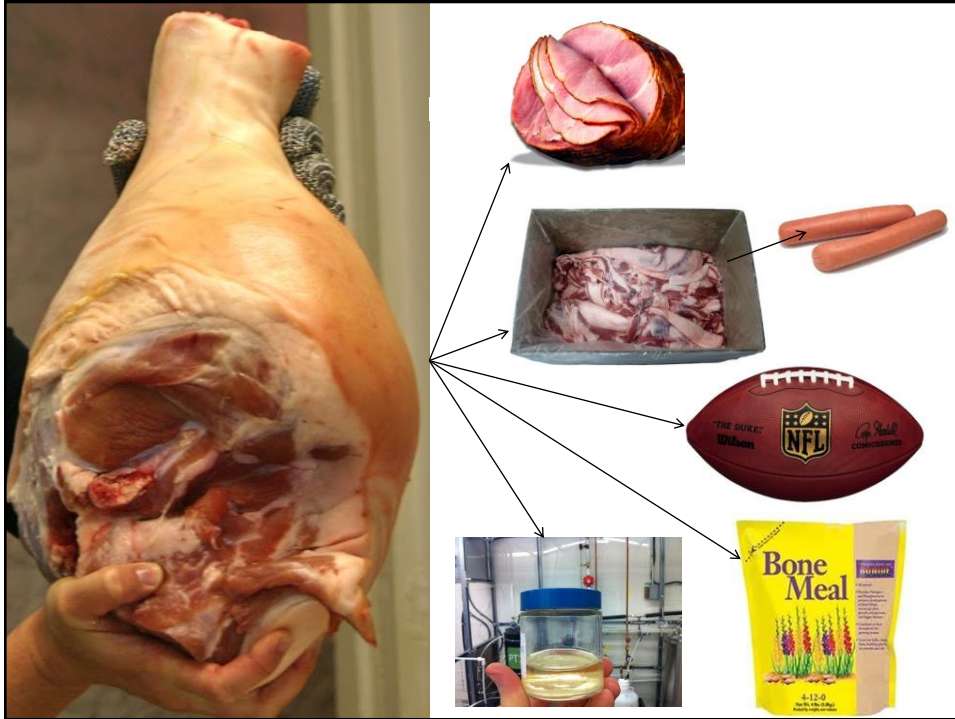
**Many KSFs in food processing are aligned with the elimination of waste**

Raising  
Manufacturing  
Yield

Minimizing  
Returns

Extending  
Shelf Life

Adding Value  
To Byproducts





... and downstream.



Par-bake



MAP



Portion Packaging



Formulation



The challenge is managing the trade-offs



Energy use



Packaging



Packaging



Clean Label



## “Over-packaging” can doom a product

thestar.com

### LIFE

## Dempster's cancels Morning Mate

The Morning Mate is toast.

By: Stuart Laidlaw faith and ethics reporter, Published on Fri Mar 09 2007

The Morning Mate is toast.

After a test=marketing campaign in December that went horribly wrong, Dempster's has decided against putting the pre-packaged bagel and condiments product on store shelves.

"We do not expect we will proceed with a formal launch of the product at this time," Dempster's spokesperson Doyle Brown said in a letter to two Toronto women who started a petition against the packaging.

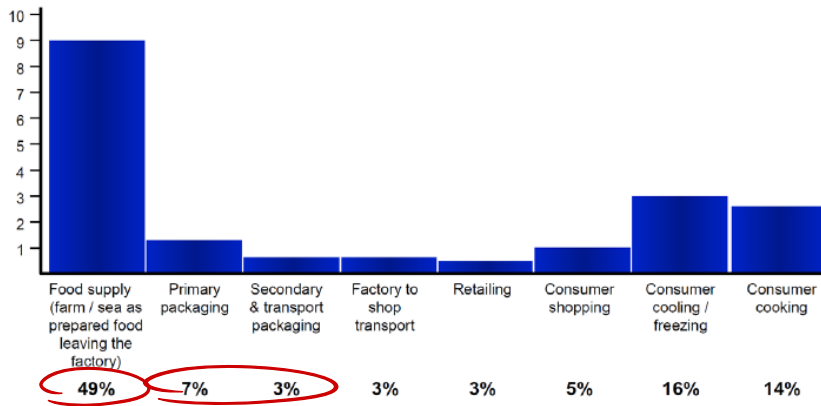
Amy Nugent and roommate Morwenna White began the online petition after White was handed a free sample of the Morning Mate outside a subway station on her way to work.



## The food inside the package has a much larger environmental footprint

Energy use in the food chain (per person per year)

GJ / Year



Use of sustainable packaging materials is key.

Source: UK Advisory Committee on Packaging.



**Costs borne in one part of the value chain can reduce waste and cost elsewhere**

---



Coordination of costs and benefits is required.



---

# Cut Waste GROW PROFIT™

Second Annual  
Food Waste Forum – 2013